

**DHX32 Antibody (Center)**  
**Affinity Purified Rabbit Polyclonal Antibody (Pab)**  
**Catalog # AP13575c****Specification**

---

**DHX32 Antibody (Center) - Product Information**

Application	IHC-P, WB,E
Primary Accession	<a href="#">Q7L7V1</a>
Other Accession	<a href="#">NP_060650.2</a>
Reactivity	Mouse
Host	Rabbit
Clonality	Polyclonal
Isotype	Rabbit IgG
Calculated MW	84419
Antigen Region	342-371

**DHX32 Antibody (Center) - Additional Information****Gene ID** 55760**Other Names**

Putative pre-mRNA-splicing factor ATP-dependent RNA helicase DHX32, DEAD/H box 32, DEAD/H helicase-like protein 1, DHLP1, DEAH box protein 32, HuDDX32, DHX32, DDX32

**Target/Specificity**

This DHX32 antibody is generated from rabbits immunized with a KLH conjugated synthetic peptide between 342-371 amino acids from the Central region of human DHX32.

**Dilution**

IHC-P~~1:10~50

WB~~1:1000

E~~Use at an assay dependent concentration.

**Format**

Purified polyclonal antibody supplied in PBS with 0.09% (W/V) sodium azide. This antibody is purified through a protein A column, followed by peptide affinity purification.

**Storage**

Maintain refrigerated at 2-8°C for up to 2 weeks. For long term storage store at -20°C in small aliquots to prevent freeze-thaw cycles.

**Precautions**

DHX32 Antibody (Center) is for research use only and not for use in diagnostic or therapeutic procedures.

**DHX32 Antibody (Center) - Protein Information****Name** DHX32

**Synonyms** DDX32**Cellular Location**

Nucleus. Mitochondrion

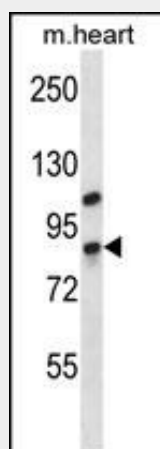
**Tissue Location**

Expressed in lymphoid tissues (at protein level). Expressed in brain, heart, skeletal muscle, colon, thymus, spleen, kidney, liver, small intestine, placenta, lung, lymphoid tissues and blood leukocytes.

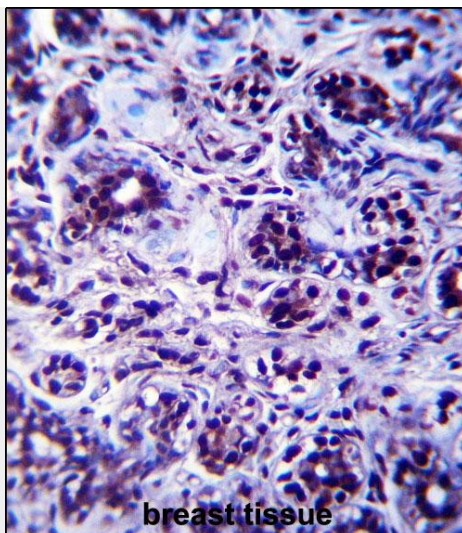
**DHX32 Antibody (Center) - Protocols**

Provided below are standard protocols that you may find useful for product applications.

- [Western Blot](#)
- [Blocking Peptides](#)
- [Dot Blot](#)
- [Immunohistochemistry](#)
- [Immunofluorescence](#)
- [Immunoprecipitation](#)
- [Flow Cytometry](#)
- [Cell Culture](#)

**DHX32 Antibody (Center) - Images**

DHX32 Antibody (Center) (Cat. #AP13575c) western blot analysis in mouse heart tissue lysates (35ug/lane). This demonstrates the DHX32 antibody detected the DHX32 protein (arrow).



DHX32 Antibody (Center) (Cat. #AP13575c) immunohistochemistry analysis in formalin fixed and paraffin embedded human breast tissue followed by peroxidase conjugation of the secondary antibody and DAB staining. This data demonstrates the use of DHX32 Antibody (Center) for immunohistochemistry. Clinical relevance has not been evaluated.

#### **DHX32 Antibody (Center) - Background**

DEAD box proteins, characterized by the conserved motif Asp-Glu-Ala-Asp (DEAD), are putative RNA helicases. They are implicated in a number of cellular processes involving alteration of RNA secondary structure such as translation initiation, nuclear and mitochondrial splicing, and ribosome and spliceosome assembly. Based on their distribution patterns, some members of this DEAD box protein family are believed to be involved in embryogenesis, spermatogenesis, and cellular growth and division. This gene encodes a member of this family. The function of this member has not been determined. Alternative splicing of this gene generates 2 transcript variants, but the full length nature of one of the variants has not been defined.

#### **DHX32 Antibody (Center) - References**

Huang, C., et al. J. Exp. Clin. Cancer Res. 28, 11 (2009) :  
Chen, Y., et al. Exp. Mol. Pathol. 82(3):256-261(2007)  
Alli, Z., et al. Anticancer Res. 27 (1A), 373-377 (2007) :  
Alli, Z., et al. Exp. Mol. Pathol. 81(3):245-248(2006)  
Alli, Z., et al. Cell. Immunol. 237(2):141-146(2005)